



CESCO Magnetics
 90Market Street
 Georgetown
 Texas 78626 USA



Phone: 707-585-2402
 Fax: 707-585-3886
 Toll Free: 877-624-8727
 cescomagnetics.com

S E R V I N G T H E F O O D I N D U S T R Y S I N C E 1 9 4 6

• **MODEL 135EC (EASY CLEAN) MAGTRAP** •
 Manual or Pneumatic Actuation



Easy Clean Magtrap - One Pull And Unwanted Trash Is Gone

Magtraps Remove Unwanted Ferrous From Your Products

Easy Clean (EC) Magtraps and elements are available in line sizes to 4". Release of captured metal during processing is impossible without leaving evidence of tampering. Carry handles provide ease of handling. Available with water jackets. All types of connections are available.

□ **THE EASY CLEAN (EC) MAGTRAP** is available complete, as shown in photo 1, or as an element, as shown in photo 2. Elements fit all existing CESCO Model 135 bodies. A manually operated EC is shown. Pneumatic actuation is available.

□ **THE EASY CLEAN ELEMENT IN THE "OPERATING POSITION"** (Photo 2) The Easy Clean (EC) element is removed from the Magtrap body by releasing the middle clamp. A stainless safety cable connects this clamp to the lift rod. This cable prevents release of collected trash during processing. Product flows past the stainless

tubes beneath the element. Rare earth magnets inside the tubes capture and hold the unwanted ferrous, nickel, carbide and work-hardened stainless debris.

□ **THE EASY CLEAN ELEMENT IN THE "CLEANING" POSITION** (Photo 3) Raising the lift rod instantly releases all collected metal trash from the magnets. The tubes are then rinsed and cleaned. The lift rod is lowered into the "operating" position (photo 2). The Easy Clean element is reattached to the body (photo 1) and processing can continue.

CESCO builds **QUALITY** equipment made to your satisfaction.

CESCO for all your magnetic separator needs.

Model 135EC (Easy Clean) Magtrap

Magnetic Element:

- 1" - 2"
- MF 650-400
- 2 1/2" - 3"
- MF 850-518
- 4"
- MF 850-675



- L-Ring
- 1" - 2"
- LR650
- 2 1/2" - 4"
- LR850

- Body
- 1" - 2"
- BD650-400
- 2 1/2" - 3"
- BD850-518
- 4"
- BD850-675

- Clamp
- 1" - 2"
- CL650L
- 2 1/2" - 4"
- CL850L

- Base
- 1" - 2"
- BT650
- 2 1/2" - 4"
- BT850

LINE CONNECTIONS: Tri-Clamp and weld ends are standard. To assure a perfect match on weld ends, specify your line's outside and inside diameters. Bevel Seat (Acme Thread), John Perry, International Dairy fittings (IDF), Q-line, I-line, pipe threads, connections with captive nuts, pipe flanges and various European sanitary ferrules are available at extra cost. Non-similar sized ends are also available. For all except our standard connections, please inquire.

MAGNETS: Rare earth magnets capture and hold the very finest of ferrous and nickel particles as well as bits of work hardened 300 series stainless steel and carbide. Standard rare earth magnets operate to a maximum of 210°F. (99°C.) without degrading their strength. By substituting other rare earth magnets the maximum working temperature can be extended to 400°F. (204°C.).

SPECIFICATIONS: All product contact surfaces are type 316L stainless steel except for gaskets. Gaskets are available in several Food Grade compounds.

REPLACEMENT PARTS (Part numbers on left): CESCO maintains stock of replacement parts at all times. Please provide the serial number stamped on the unit, or the model and line size, when ordering parts.

HOW TO SIZE A MAGTRAP:

MAGTRAPs work best with slower flow rates. It is easier to pull particles through low viscosity products than through higher viscosity products. Use **TABLE A** to classify your product's viscosity (Example: Water is Class 1, Cold Molasses, Class 4). From **TABLE B** select the appropriate size by comparing your line's maximum pumping capacity with various size MAGTRAP maximum flow ratings and product classes. If operating near the top of a flow capacity limit, move up one MAGTRAP size to provide for future increased pumping needs.

TABLE A:

Select a class that best matches the most viscous product to be pumped. Remember that temperature and percent of liquid greatly affect viscosity.

CLASS 1:

FLUID AND STRAINED PRODUCTS (1-1,000 CPS): Beverages, clear broths, thin soups, juices, warm jellies, light sauces, thin salad dressings.

CLASS 2:

PULPED PRODUCTS (1,000-5,000 CPS): Applesauce, pulped fruits and vegetables, syrups, custards, baby foods, cranberries, hot preserves.

CLASS 3:

VISCOUS PRODUCT (5,000-50,000 CPS): Chopped foods, creamed cheese, pumpkin filling, frozen slush, heavy sauces, batters, heavy purees.

CLASS 4:

VERY VISCOUS PRODUCTS (50,000+ CPS): Cooled products, pet foods, nut butters, minced meat, thick batters and slow flowing products.

TABLE B

Maximum Effective flow in Gallons/Minute & Liters/Minute

Line Size	Class 1	Class 2	Class 3	Class 4
1" - 2"	120	105	60	30
38 - 50	570	400	230	115
2.5" - 3"	250	175	100	50
65 - 75	950	660	380	190
4"	340	240	140	70
100	1290	900	520	260

Weight in Pounds & Kilograms

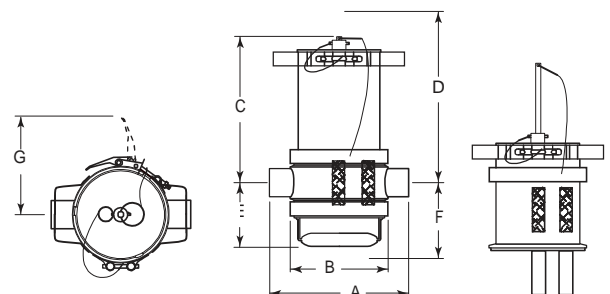
Line Size	Elements Only		Complete	
	Net	Ship	Net	Ship
1" - 2"	19	25	34	40
38 - 50	8.6	11.3	15.4	18.2
2.5" - 3"	33	43	57	67
65 - 75	14.9	19.5	25.8	30.4
4"	39	49	70	80
100	17.7	22.3	31.8	36.4

Call for information regarding pneumatic actuation

Dimensions - English (inches) & Metric (mm)

Line Size	A	B	C	D	E	F	G
1" - 2"	10	7	4.3	8.3	4.3	4.8	8.5
38 - 50	254	178	108	210	108	120	216
2.5" - 3"	12	8.9	5.1	10.3	5.1	5.5	10
65 - 75	305	225	130	260	130	152	254
4"	12	8.9	5.9	12.8	5.9	6.3	10
100	304	225	150	324	150	160	254

Dimensions and weights subject to change.



D & F = Removal Clearance



CESCO Magnetics • 90 Market Street • Georgetown • Texas 78626 USA
 Phone: 707-585-2402 • Fax: 707-585-3886 • Toll Free: 877-624-8727 • cescomagnetics.com

SERVING THE FOOD INDUSTRY SINCE 1946